

High Energy-efficient Circulator Pump Installation and operating Instruction



Warning

Prior to installation, read these installation and operating instruction. Installation and operation must comply with local regulations and accepted codes of practice.

CONTENT

General information	1
Low-energy circulation pump	1
Pump liquid	1
Connotation of the Type	2
Control panel	2
Performance drawing	4
Fault in chart	5-6
Installation	8-12
Accessories	13

1 General information

These Operating Instructions explain the functions and operation of the pump when installed and ready for use.

The figures referred to in the text can be found on the fold-out plate at the front

2 Low-energy circulation pump

Low-energy circulation pump is designed for the circulation of water in heating systems.

Install the low-energy circulation pumps in

- Underfloor heating systems
- One-pipe systems
- Two-pipe systems

Low-energy circulation pump incorporates a permanent-magnet motor and difference-pressure control enabling continuous adjustment of the pump performance to the actual requirements.

2.1 Advantages of installing a Low-energy circulation pump

The installation of a Low-energy circulation pump means

Easy installation and start-up

- Low-energy circulation pumps is easy to install.

With the factory setting, the pump can, in most cases, be started without marking any setting

High degree of comfort

- Minimum noise from valves, etc.

Low energy consumption

- Low energy consumption compared to the convention circulation pumps

It is A-labelled as follows:



EEI ≤ 0.23

3 Pump liquid

Clean, thin, non-aggressive and non-explosive liquids, not containing solid particles, fibres or mineral oil

In heating systems, the water meet the requirements of accepted standards on water quality in heating system

4 Connotation of the Type

High energy-efficient circulator pumps

Nominal width (mm)

25(=1 1/2"),32(=2")

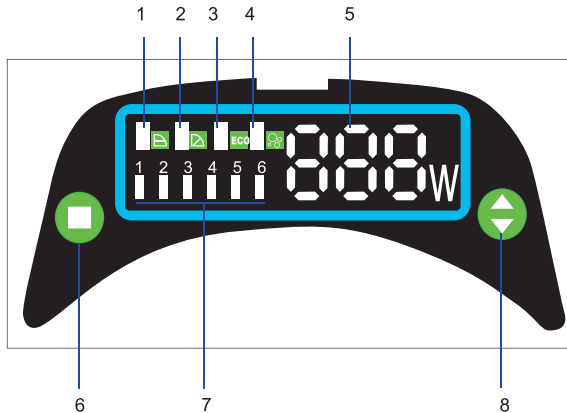
Maximum head (dm)

Efficiency A class

RS □ / □ EA

5 Control panel

5.1 Elements on the control panel



Pos.		
1		Light in Constant Pressure
2		Light in Proportional Pressure
3		ECO mode
4		Light in Air-Vent (Press Setting Button for 5-6seconds)
5		Power Light
6		Button for change of control mode (The button is used for change the pumps modes, for example: from Constant pressure to proportional pressure, or to ECO mode, also can for Air-venting mode.)
7		Light for each speeds (The 6 lights are shown the different working conditions. Only under two modes(Constant Pressure and Proportional Pressure, these lights can be chosen.)
8		Button for setting (This button is used for setting the different speeds(light in 1,2,3,4,5,6) for two modes. Using this button, we can chose the speeds from Max.to Min..)

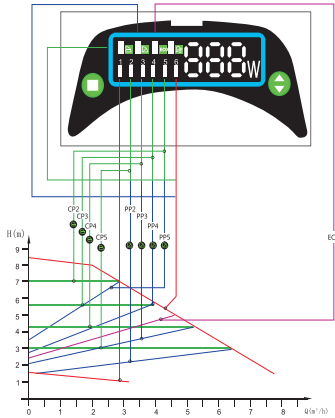
5.2 Lights fields indicating the pumps setting





Low-energy circulation pump has seven optional setting which can be selected with the push-button. See 8 in the above label
The pump setting is indicated by seven different light fields. See the above label.


5.3 Push-button for selection of pump setting

Every time the push-button is pressed, the pump setting is changed.
A cycle is seven button presses.

6 Relation between pump setting and pump performance



Control Panel Pump Curve	Description
 CP2, CP3, CP4, CP5	The Operating Point moves back and forth on the curve according to the volume of flow from the system. As shown in the graph, the pump pressure remains constant, not affected by the volume demands of flow.
 CP1--Min. Speed CP6--Max.Speed	The two speeds are the min. and Max. ones under constant Pressure, the curve shown as in graph. can not keep constant. It rises and goes down as Manual operation.
 PP2, PP3, PP4, PP5	The Operating Point moves back and forth on the Proportional Pressure curve according to the volume of flow from system. As shown in the graph, the pump pressure is directly proportional to the flow demands.
 CP1--Min. Speed CP6--Max.Speed	The two speeds are the min. and Max. ones under Proportional Pressure, the curve shown as in graph. can not keep constant. It rises and goes down as Manual operation.

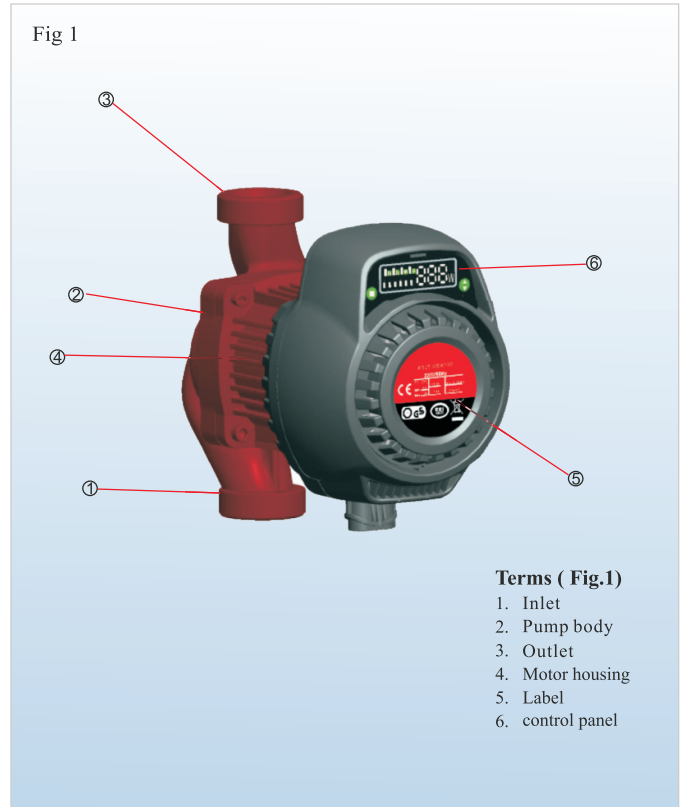
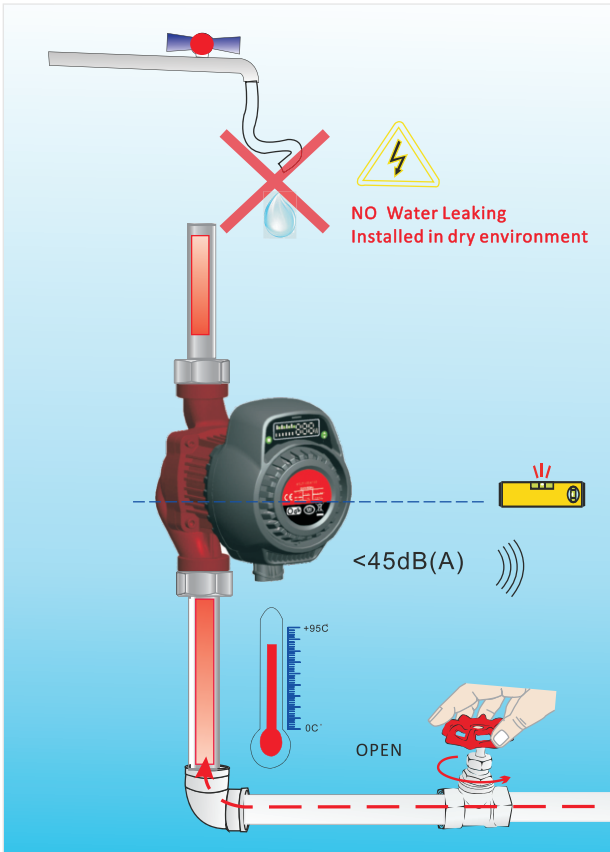
Control Panel Pump Curve	Description
 ECO	this mode use working as "autoadaptation". It confines the performance of the pumps in aimed scope. As shown in Graph.: 1. Performance can be adjusted according to the scale of system 2. Performance can be adjusted according to the changing of load during a specific period. Under the mode of ECO, the pump is controlled by means of Proportional pressure.

7 Fault in finding chart

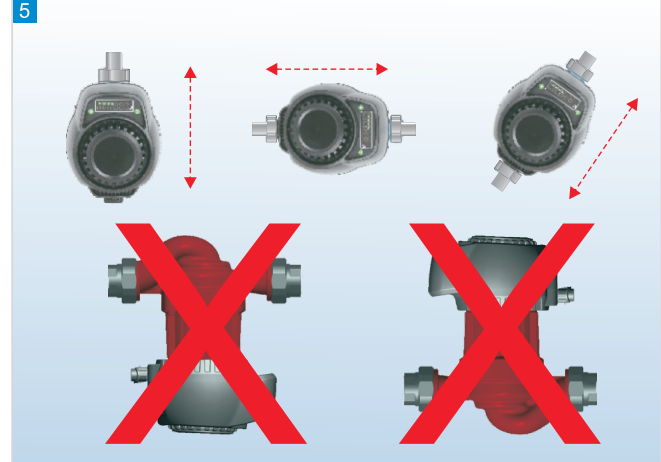
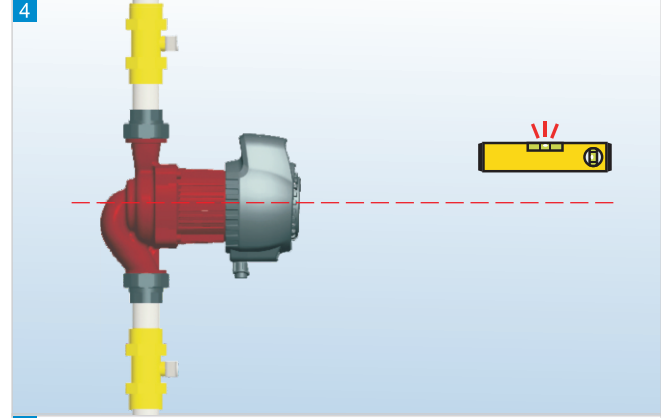
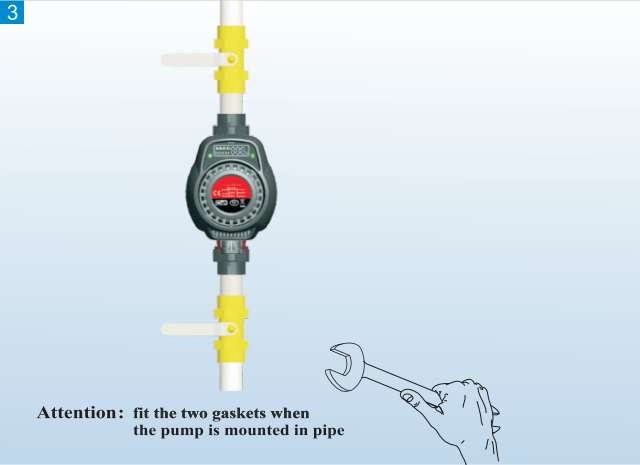
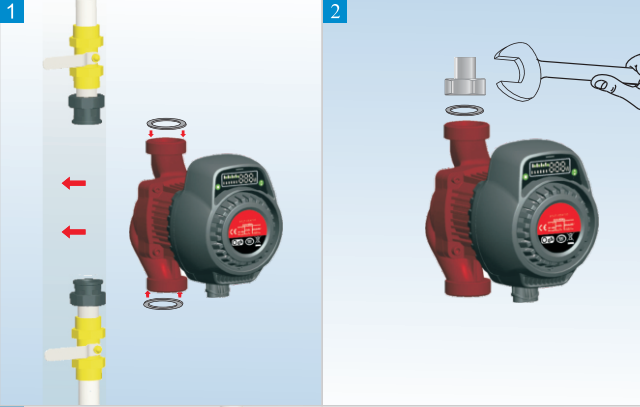


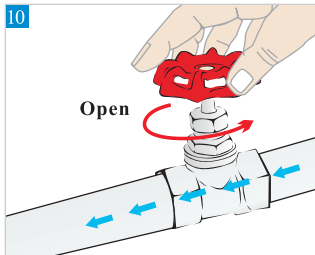
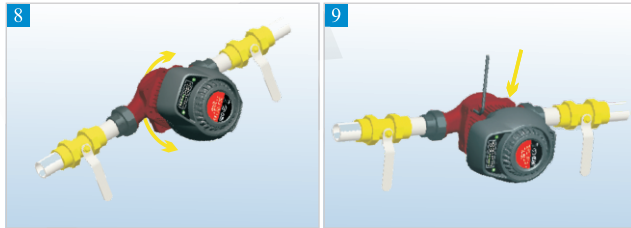
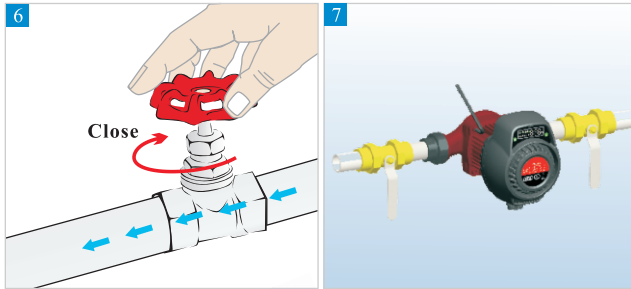
Warning

Before starting any work on the pump, make sure that the Electricity supply has been switched off and that it cannot be Accidentally switched on.



Installation





Warning

The pump liquid may be scalding hot and under the high pressure. Drain the system or closed isolated valves on either side of pump before removed the screws.



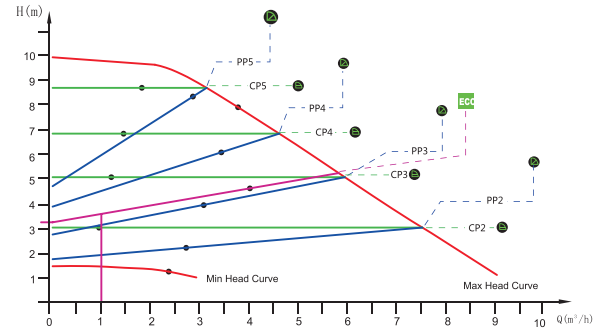
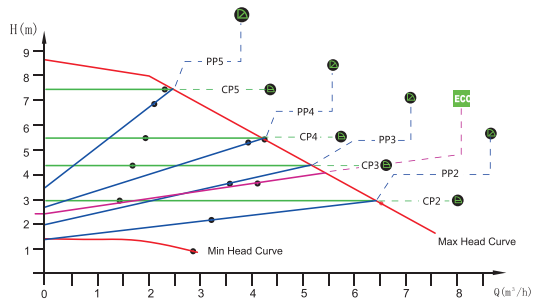
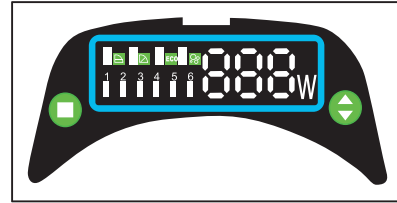
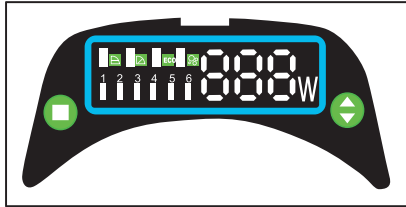
Accessories



External plug



Fittings



Fault	Control panel	Cause	Remedy
1. the pump does not run	light off	a) One fuse in the installation is blown	Replace the fuse
		b) The current-operated or voltage-operated circuit breaker has tripped out	Cut in the circuit break
		c) The pump is defective.	Replace the pump.
	Only show Power	a) Electricity supply failure. Might be too low	Check that the electricity supply Falls within the specified Range.
b) The pump is blocked		Remove the impurities	
2. Noise in the System	show power and light field for Pump setting are On	a) Air in the system	vent the system
		b) the flow is too high	Reduce the suction head
3. Noise in the Pump	show power and light field for Pump setting are On	a) Air in pump	Let the pump run. it vents itself over time
		b) the inlet pressure is Too low.	Increase the inlet pressure Check the air volume in The expansion tank. if installed
4. Insufficient	show power and Light field for Pump setting are on	a) the pump performance is too low	Increase the suction head

